

# RAYSAN

Flexible Barrier  
POLYGUARD  
PuffyGuard

## 1R ZETA RACK END BARRIER

DESIGNED FOR EASY ASSEMBLY, THIS BARRIER IS IDEAL FOR MINIMIZING DAMAGE FROM VEHICLE COLLISIONS WITH LOW-LYING RACKS IN STORAGE AREAS WITH TRANSPORT AND LOADING TRAFFIC. SPECIFICALLY CRAFTED TO PROTECT RACK HEADS FROM CONSTANT IMPACTS, IT REDUCES WEAR AND TEAR CAUSED BY TRANSPORT AND STACKING VEHICLES. IT OFFERS ENHANCED RESISTANCE AGAINST FORKLIFT FORK IMPACTS AT GROUND LEVEL, ENSURING MAXIMUM DURABILITY AND PROTECTION.



## STRONG AND LIGHTWEIGHT

Thanks to its unique chemical formula, our barrier surpasses steel barriers in both strength and weight. It is significantly lighter while maintaining its exceptional durability.

## MODULAR

Thanks to its modular design, our barrier effortlessly adapts to the changing needs of your facility. This flexible solution is extremely easy to install, assemble, disassemble, relocate and organize.

## NO CORROSION

Unlike steel barriers, our barriers are made of durable polymer materials, making them unaffected by environmental elements such as sunlight and rainwater.

## NO PAINT AND MAINTENANCE NEEDED

Unlike Raysan's steel barriers that require regular painting and maintenance, our self-colored structure eliminates the need for these processes. Even if the barrier is scratched due to an impact, its surface retains its original color without any change.

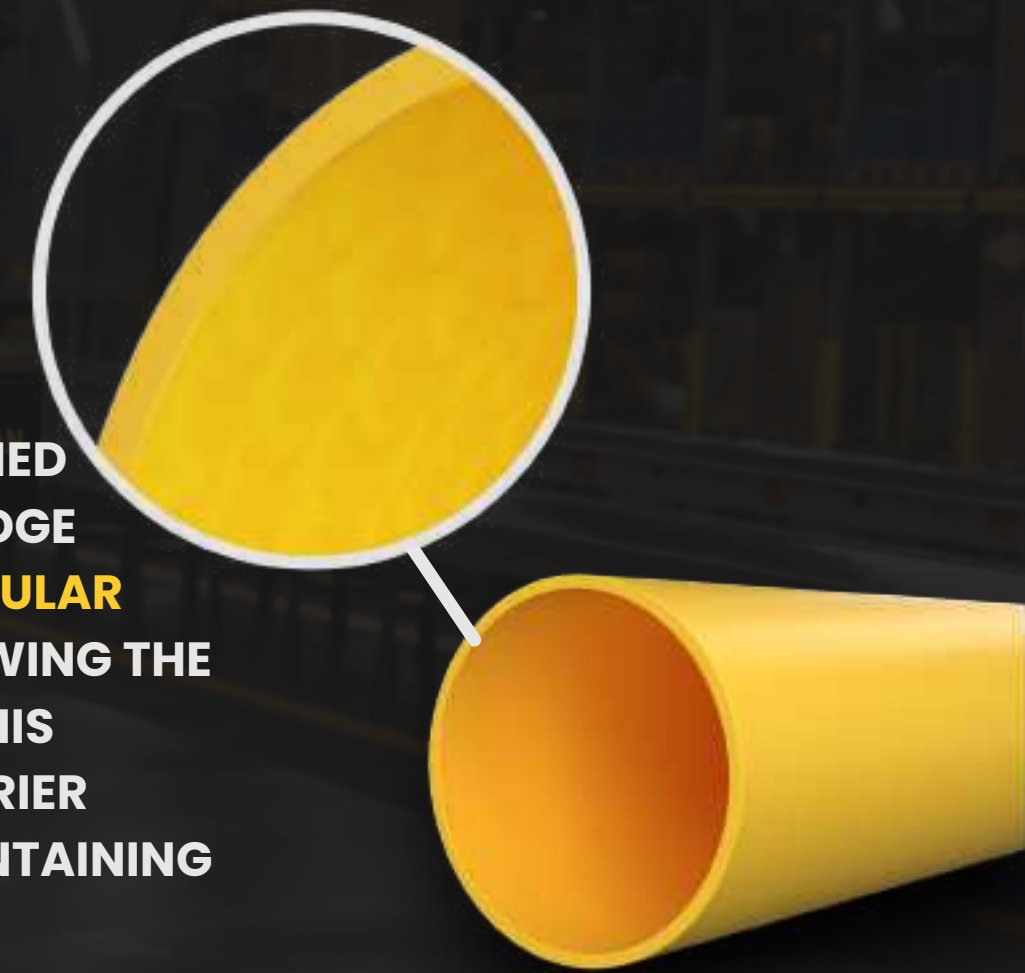
## ULTRAVIOLET RESISTANT

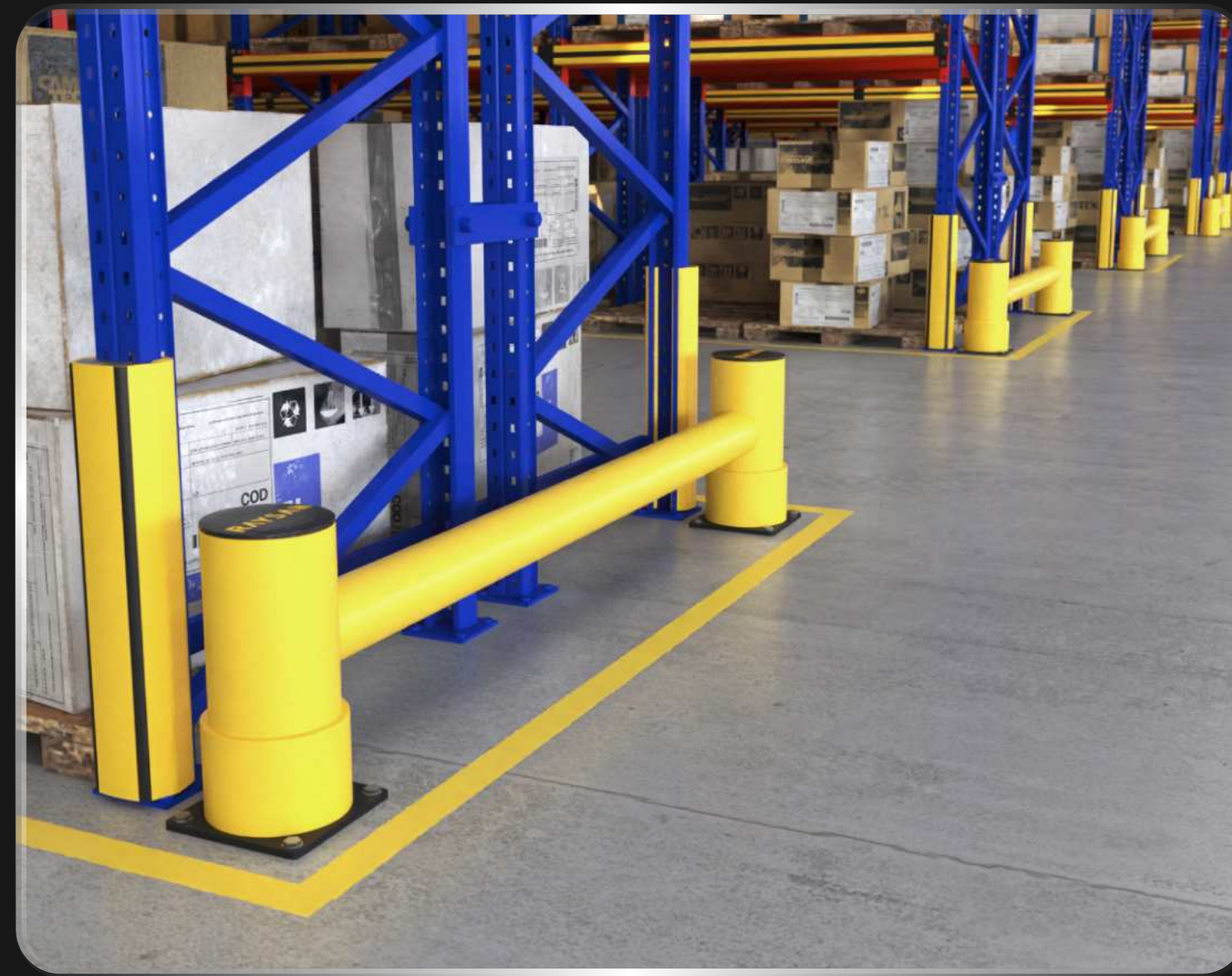
Our barriers are designed with exceptional resistance to UV radiation. Their chemical structure remains intact even after prolonged outdoor use, ensuring long-term durability.

## ANTIBACTERIAL

Our barriers have an exceptional chemical formula that prevents them from having any chemical reaction with the substances they come into contact with.

EXPERIENCE **UNPARALLELED STRENGTH** WITH OUR **ADVANCED POLYMER**, CRAFTED FROM A **PREMIUM BLEND OF SOPHISTICATED POLYOLEFINS AND RUBBER ADDITIVES**. THIS **EXCLUSIVE COMPOSITION DELIVERS UNMATCHED DURABILITY AND FLEXIBILITY**. OUR **CUTTING-EDGE ENGINEERING PROCESS REORIENTS THE MOLECULAR STRUCTURE DURING MANUFACTURING**, ENDOWING THE BARRIER WITH A **UNIQUE BUILT-IN MEMORY**. THIS **INNOVATIVE FEATURE ENSURES THAT THE BARRIER RECOVERS COMPLETELY AFTER IMPACTS**, MAINTAINING **PEAK PERFORMANCE AND RELIABILITY**.





# ZETA

Post Dimension [D1]

Ø160 mm

Post Height [H]

450 mm

Rail Dimension [D2]

Ø125 mm

Rail Length Range [L1]

800 mm - 2350 mm

Barrier Length MAX [L2]

2510 mm

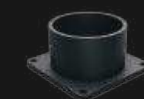
Impact Zone [Z]

125 mm

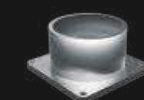
## TECHNICAL DRAWING



## FIXING REQUIREMENTS



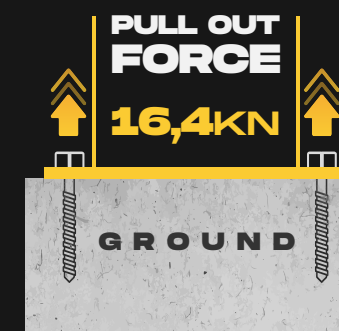
ELECTROSTATIC PAINT



STAINLESS STEEL

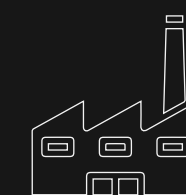


GALVANIZE

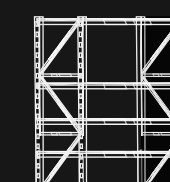


Concrete Quality	Minimum C25/30
Concrete Floor Plate Thickness [mm]	Minimum 150 mm
Water and Humidity	<p><b>Steel</b> [standart] : Suitable for dry indoor use only.</p> <p><b>Galvanize</b> : Can be used in most outdoor environments.</p> <p><b>Stainless Steel</b> : Ideal for outdoor use or environments with frequent exposure to water and humidity.</p>

SUITABLE APPLICATION

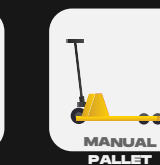


BUILDING AND EQUIPMENT SAFEGUARDS



WAREHOUSE PROTECTION SOLUTIONS

SUITABLE FOR



- \*90° Impact on Mid Rail of Maximum Post Centres
- \*Results are Reflecting instantaneous Impact Values
- \*Does not Provide Resistance to Sharp Impacts

## IMPACT ENERGY DETAILS

90° IMPACT

ZETA 5,800 JOULE



STANDART COLORS

RAL 1018 PANTONE 123C

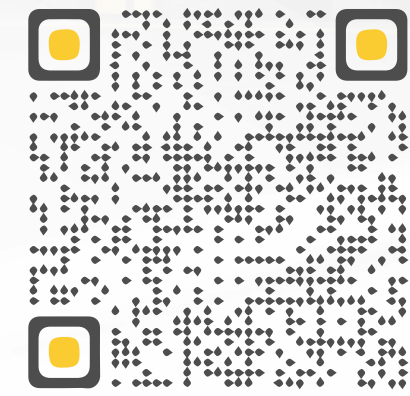
RAL 9005 PANTONE B6C

\*Please note that the RAL and PANTONE colours listed are the closest match to standard RAYSAN colours, but may not be exact matches of the actual product colour and should be used for guidance only.

RAYSAN

Flexible Barrier POLYGUARD

## FOLLOW US



**DISCOVER MORE**  
about our innovative products,  
exceptional services &  
global network of dealers.

TÜVNORD

TÜV NORD CERT GmbH

ISO 9001

tuev-nord.de

# RAYSAN

AS RAYSAN, WE ARE PROUD TO PIONEER THE FUTURE OF INDUSTRIAL SAFETY. WITH OUR STATE-OF-THE-ART FLEXIBLE PROTECTIVE BARRIERS AND SOLUTIONS, WE ARE AT THE FOREFRONT OF INNOVATION, PROTECTING WORKPLACES AROUND THE WORLD. OUR COMMITMENT TO EXCELLENCE AND UNWAVERING DEDICATION TO ADVANCING SAFETY STANDARDS HAS PROPELLED US TO THE TOP OF THE INDUSTRY.

YOUR **TRUSTED** PARTNER